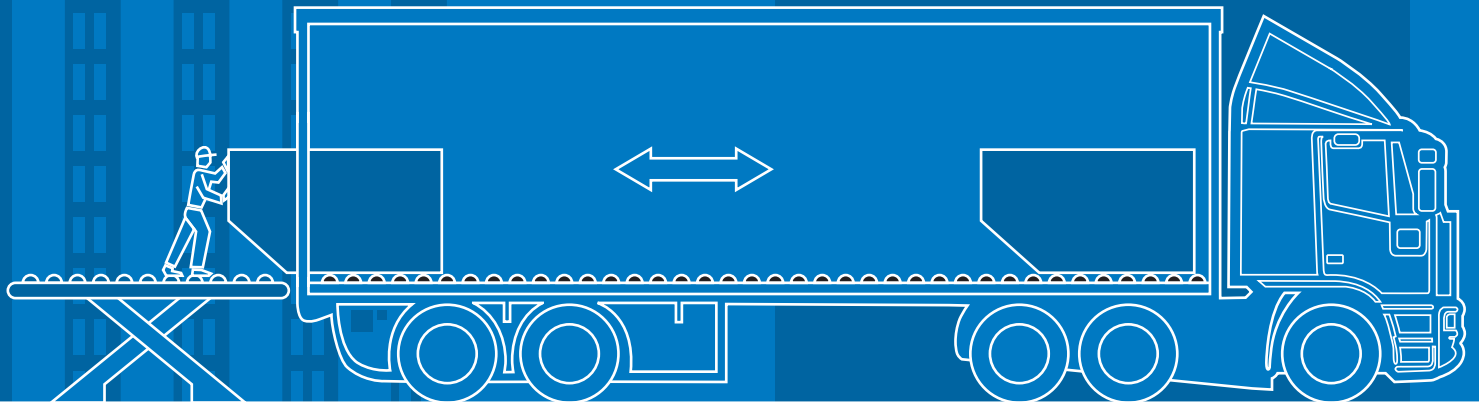
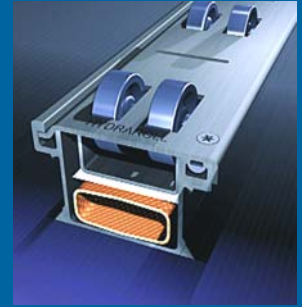


# Hydraroll<sup>TM</sup>

MAKING LIGHT WORK OF HEAVY LOADS

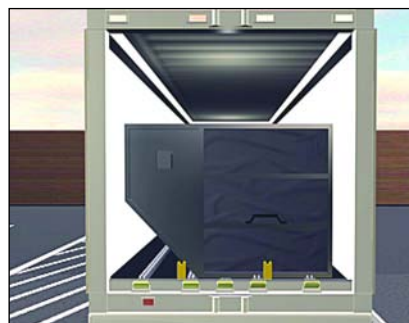
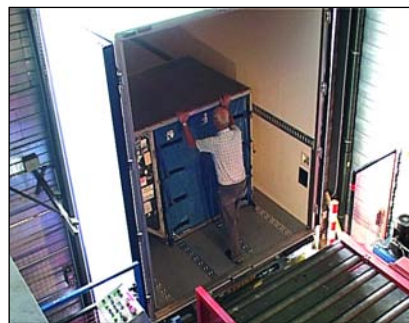


THE NEXT GENERATION OF MANUAL  
AIR CARGO ROLLERBEDS  
TWIN ROLLERTRACK SYSTEM

# THE NEXT GENERATION OF MANUAL AIRCARGO ROLLERBEDS

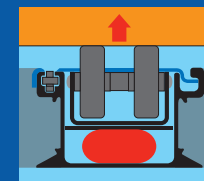
## TWIN ROLLERTRACK SYSTEM

Making light work of heavy loads

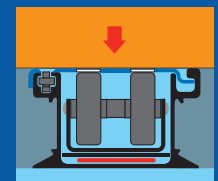


- Loads and unloads air cargo pallets and ULD containers from trucks & trailers
- A Rise and fall twin rollerbed installed into truck floor, elevating up to 13mm, capable of lifting 30,000kgs of mixed ULD's/aircargo pallets
- ULD's/aircargo pallets do not move in transit
- This manual system requires 20% less effort compared to a standard roller system to move fully loaded aircargo containers
- Gives maximum space utilisation of truck body for ULD/aircargo pallets. Standard track height of 67mm or low track height at 40mm
- External stainless steel control box giving individual or segmental lift capability
- Heavy duty top plate available to withstand fork truck wheel loading
- The safety operator controls with fail safe auto down facility via effective QEV (quick exhaust valve)
- Twin roller design and limited top plate roller opening reduces debris by 30% reducing maintenance and increasing airbag life
- 3.2m track modules and roller pitch of 80mm and 150mm available as standard
- 100,000 systems in daily service at all major airports worldwide

Rollers up



Rollers down



Patents applied for (UK & Worldwide)  
**Hydraroll Division Joloda International Ltd**  
 Gaerwen, Anglesey, Wales, LL60 6BH  
 Tel: +44 (0) 1248 421454 Fax: +44 (0) 1248 421748  
 Email: info@hydraroll.com Website: www.joloda.com

**Hydraroll**<sup>TM</sup>